



Gold plated terminals



Available in high gloss black, white, red and wood



Wall mount separately available

Speaker Box 5 E

HiFi bookshelf speaker

Black, White & Red MSRP 349€ (incl. VAT)

Wood MSRP 399€ (incl. VAT)



- 2-way bass reflex principle
- Low coloration and great transparency
- Lively dynamics
- Gold plated banana terminals
- Non-resonating MDF cabinet
- Wall mount sold separately
- Magnetic speaker grills included
- Available in high gloss black, white, red or wood

Enclosure type: bass reflex via rear firing port
Recommended amplifier power: 10 to 140 watts
Frequency response: 68Hz - 20kHz
Nominal impedance: 4 ohms
Sensitivity: 86dB (1w /1m)
Chassis: 1" silk dome tweeter
 5" fiber glass bass/mid
Dimensions: 265 x 160 x 198 mm (HxWxD)
Weight: 4,04 kg each

A True Classic - Reborn

The Speaker Box 5 has been a **staple in our speaker line-up** and has been **in production for over 15 years**. The Speaker Box 5 E is the successor and our new version to this all time classic. A **superlative sounding small bookshelf** speaker.

- Well tuned and upbeat basslines
- Lively dynamics
- Surprisingly low coloration
- Good transparency and reasonable image depth
- Bass is fast and tuneful, this is what really matters!

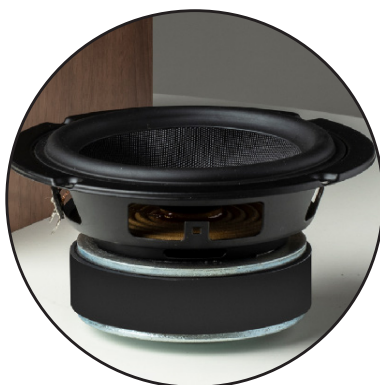


1" silk dome tweeter

For transparent and smooth treble response.

Heavy duty MDF cabinet

Extra dense acoustically optimized MDF. Allen screws fix the chassis **mechanically perfect** to the cabinet.



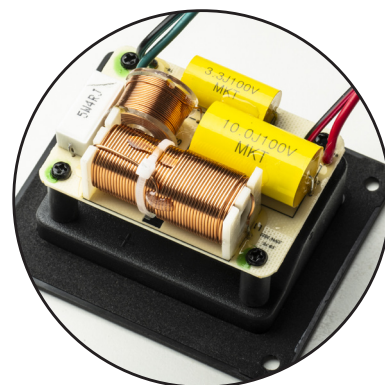
5" fiber glass bass/mid woofer

For higher **rigidity** and **stiffness**.

Less distortion at high volumes.

Huge **powerful magnet** for **ultra strong bass** drive.

Deep and firm bass response.



2-way cross-over

Sophisticated crossover network using **high quality** components on a **true PCB**.

NOT like often seen free air wiring with glued components.

Reduces distortion levels especially in **critical mid & high bands**.

